

SATHI-UP

Supporting Association for Thematic and Holistic Initiatives

ANNUAL REPORT 2017-18



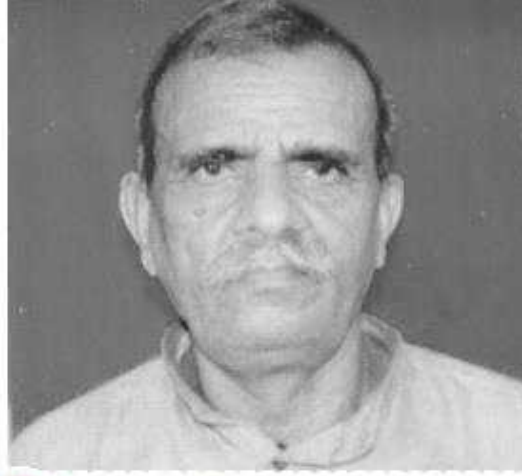
Registered Office:

At Dhirendrapuri, P.O. Chachikpur, Dist. Ambedkar Nagar, Uttar Pradesh

Coordination Office:

4044/3, Parikrama Marg, Near Saliha Hospital, Civil Lines, Faizabad, UP
Pincode-224001, Email: sathiup@gmail.com, Website: www.sathiup.com
Phone number: +91-9565181920, 9415140215

हमारे प्रेरणा स्रोत



स्व. श्री पारस भाई

(दिसम्बर 1930 से अगस्त 2000)

गुरुवर तेरे चरणों में, हम शीष झुकाते हैं ।
श्रद्धा पूरित होकर, दो पुष्प चढ़ाते हैं ।
गुरुवर तेरे चरणों में...

सदज्ञान भरो गुरुवर, सद्भाव उभर आये,
स्वविवेक भरो गुरुवर, दुर्भाव न टिक पाये,
सत्कार्य न छोड़ेंगे, हम शपथ ये खाते हैं ।
गुरुवर तेरे चरणों में...

वह भाव हमें दें आप, सब मिलजुल कर गायें,
जीवनभर ज्योति जले, यह स्नेह न मिट पाये
अभिमान न हो उसका, जो कुछ कर पाते हैं ।
गुरुवर तेरे चरणों में...

विश्वास करो गुरुवर, हम राह चलेंगे तेरी,
जनहित याचक बनकर, जन कार्य करेंगे तेरी,
कुछ त्याग नहीं अपना, बस कर्ज चुकाते हैं ।
गुरुवर तेरे चरणों में...



1. Message from the Chairman

I am very delighted to present you the annual progress report for the year 2017-2018. This year was an intense year with new opportunities and challenges. We learnt more with the challenges came and as well through our interventions. These learning' tell us to move forward with newer perspective and intervention approaches.

SATHI exist to bring positive changes on deprived faces through collaborative and organized initiatives. Positive changes came in our society gives happiness and we go with that feeling. This feeling of happiness gives us inspiration to do better. I strongly belief that by providing understanding, knowledge and way-out in the right manner to a dedicated and honest social worker, he can bring change in people's life by their own efforts. And this belief is growing year after year with the association of SATHI. It's make special honor to all members, CSOs, donors and likeminded person's for their precious contribution and cooperation in this process. Also give us self-confidence. Establishment of Friendship, Dialogue and Cooperation among different development actors is making difference.

The year 2017-2018 has been very fruitful through SATHI's intervention for rural communities, grassroots development professionals and civil society organizations. This was made possible by the generous support of our well-wishers, partners. Many thanks to their cooperation and supports..

I would like to thank our board members for their regular guidance and support. Our team members have really worked hard to achieve our plans. Lot of thanks and appreciation for their tremendous job..

Shashi Bhushan

Chairman (Chief Functionary)

April, 2018



Contents

1. About us/ Get to know us/Who we are
 - 1.1 Brief background of Organization
 - 1.2 Vision, Mission
 - 1.3 Core Ideology and Approaches to development
 - 1.4 Core Program areas of Intervention
 - 1.5 Focus Geographical area and coverage
 - 1.6 Legal status
2. Program Summary
 - 2.1 Promoting Community Action
 - 2.2 Philanthropic initiatives through capacity building of civil society
 - 2.3 Issue Based Advocacy and Networking
3. Financial summary
4. Our Funding partners/Associations/Linkages
5. Governing board at SATHI
6. Annual General Body meeting and Governing board meeting held in FY 2017-18
7. Organogram
8. Validation and Certification



1. Get to know us

1.1 Brief Background & Journey

Supporting Association for Thematic and Holistic Initiatives (SATHI) is a voluntary organization working to catalyze the development process in underdeveloped regions of Uttar Pradesh. It has been established to achieve the vision of Gram Swaraj; in which every villager/citizen realizes its human potential and contributes to development of village as well as nation through participatory, transparent and accountable local self governance system. It was conceptualized and founded by a renowned Gandhian Thinker and Social Activist Late Shree Paras Bhai with his 24 colleagues in 1992; and registered as formal organization in July 2004 under Societies Registration Act 21, 1860. Founder of SATHI, Late Shree Paras Bhai was the follower of Gandhian ideology and part of promoting Gram Swaraj initiatives post independence in most underdeveloped regions of country.

SATHI works to improve the quality of life and well-being of marginalized communities of society through capacitating small and grassroots' level potential civil society organizations, building perspective of development professionals working at grassroots level and leadership building among deprived section of society; So that they work for the betterment of marginalized communities. We work mainly with two section 1) With most marginalized communities with the focus of women to empower them to realize their human rights enhance livelihood and access primary healthcare services for herself and her children and thereby improve their living condition and 2) with civil society group to help them to execute various development models at community level and for their institutional strengthening.

Since its inception, SATHI has been engaged bringing positive changes among marginalized communities through thematic and institutional strengthening support to grassroots level CSOs. We implemented different initiatives for thematic understanding & perspective building of CSOs and development professionals. We with the focus aim of marginalized community's development; implementing interventions on women's human rights and livelihood, women & children's primary healthcare. Presently 469 grassroots level CSOs from 40 SATHI District Forums-SDFs are associated with us as member organization. We are operating interventions currently in 40 districts of Eastern, Tarai (Indo-Nepal Border), Awadh, Vindhya and Bundelkhand regions of Uttar Pradesh through its SATHI District Forums (SDFs) and directly implementing the projects in Faizabad, Jhansi and Allahabad.

1.2 Vision and Mission

SATHI envisions Effective, transparent and accountable group of civil society organizations to catalyze the development process.

Our Mission is Professionalization of civil society organizations and fosters their spirit of voluntarism for the development of underdeveloped regions in country.



1.3 Core Ideology and Approaches to development

Core Ideology of organization is to promote **Friendship- Dialogue- Cooperation** among its stakeholders for making positive difference in society through collective & collaborative efforts.

SATHI adopts the following **approaches** to development

- Bringing together like-minded voluntary organizations
- Promoting community Action through peoples collective, Voluntary efforts and Professional involvements
- Intervention planning with needs and perspective of beneficiaries/target group, in integrated development approach
- Inclusive approach to development
- Engaging with PRI and local self governance system
- Gender Sensitive approach

1.4 Core Program areas of Intervention

SATHI has been established as capacity building organization, resource organization and platform for civil society/voluntary organizations and development professionals in UP; where they: obtain organization development-OD & thematic input, build developmental perspective, and get support in development intervention. From last five years, SATHI has on track direct intervention with communities to experiment the intervention and share this learning's with other development actors. SATHI's direct intervention thematic focus is on women's human rights and livelihood, women & children's primary healthcare. So that these experimented models and its learning scale-ups can be at larger level. SATHI works in the following thematic areas with the focus aim of promoting community action and bringing smile on deprived faces.

- Promoting Community Action for
 - Women empowerment and governance
 - Sustainable Livelihood
 - Health & Nutrition
- Philanthropic initiatives through capacity building of civil society
- Issue Based Advocacy and Networking

1.5 Focus Geographical area and coverage

SATHI is operating its interventions currently in 40 districts of Eastern, Tarai (Indo-Nepal Border), Awadh, Vindhya and Bundelkhand regions of Uttar Pradesh through its SATHI District Forums (SDFs) and directly implementing the projects in Faizabad, Jhansi and Allahabad. These areas/regions come in under developed category. Our focus is to catalyze development process in these regions through different programs.

Year 2017-18 outreach and coverage of SATHI's intervention are as following.



Promoting Community Action on the issues of women empowerment & governance, sustainable livelihood and health & nutrition has been in districts Faizabad, Allahabad and Jhansi with the coverage of 3 blocks and 147 Gram Panchayats.

Philanthropic initiatives through capacity building of civil society: Institutional strengthening of civil society organization has been done with 185 organizations of 17 districts and provided visioning and perspective building inputs to 202 organizations from other 23 districts. Total 387 civil society organizations has been part of capacity building intervention, and has been engaged with 8 students of Mahatma Gandhi Chitrakoot Gramoday Vishwavidyalay, Chitrakoot as Gramoday Fellows.

Issue Based Advocacy and Networking: SATHI is a platform of grassroots organizations promoting mutual dialogue, friendship and cooperation. The SATHI presently has 469 CSOs of 40 districts as members. 60 grassroots level CSOs of SATHI network from 20 districts are engaged with the initiatives of promoting access of quality Family Planning services in Uttar Pradesh.

1.6 Legal Status of SATHI

Legal Status	: Non Governmental Organization-NGO
Registered under	: Societies Registration Act 21, 1860
Name of Chief Functionary	: Shashi Bhushan, Chairman
Registered Address	: Dhirendrapuri, post Chachikpur via Goshainganj, District- Ambedkar Nagar, Uttar Pradesh
Coordination office	: 4044/3, Parikrama Marg, Near Saliha Hospital Civil Lines, Faizabad, Uttar Pradesh- 224001
Telephone	: +91-9565181920, 9415140215
E-mail address	: sathiup@gmail.com
Website	: www.sathiup.com

Registration details

- **Place:** Faizabad, **Date:** 31st July, 2004, **Registration no:** 476/2004-05, **Act:** Societies Registration Act 21, 1860
- **FCRA Registration No. and Date:** 136780014 (dated 06-01-2011) and renewed in May, 2016.
- **Registered under section 12A(a) of the Income Tax Act, 1961**
- **Registered under section 80G of the Income Tax Act, 1961**
- **PAN :** AAAJS2812E
- **TAN :** LKNS13263F
- **NITI Aayog, NGO Darpan Unique ID:** UP/2009/0010886

Policies detail

- | | |
|---------------------------------|---------------------------------|
| i) Finance Policy | ii) Human Resource Policy |
| iii) Child Protection Policy | iv) Gender Policy |
| v) Whistle Blower Policy | vi) Conflict of Interest Policy |
| vii) Non- Discrimination Policy | viii) Good Governance Policy |



2. Program Summary

2.1 Promoting Community Action

SATHI's major thematic focus of Promoting Community Action is on women's human rights and livelihood, women & children's primary healthcare. We work to improve the quality of women and children's life and their well-being. As a part of our intervention approach; we conceptualize and design women-centric interventions; so that women's could get opportunity to realize their potential and come forward to leadership positions to bring-in desirable changes in their life's situation.

We adopts the following approaches in our community based interventions

- Forming women collective named Nari Sangh to provide them a platform to discuss, analyze and prioritize their issues which matter a lot for them and devise strategies to work on.
- Investing in knowledge and capacity building of community to promote community actions on the issues which they intend to address.
- Promote functional literacy, adoption of advanced agriculture technologies for agriculture to enhance their livelihood through agro-based and allied micro-enterprises and realize the benefits' of govt.'s flagship schemes/programs
- Use inclusive approach to outreach and collectivize women from all sections of society irrespective of caste, class, religion etc who need an enabling environment to come forward to improve their situation.
- While designing interventions; the community's perspective and their felt needs are taken into consideration on priority so that during the implementation their engagement can be ensured.
- Engage women CBOs with local governance system and relevant stakeholders for the convergence of efforts and leverage the technical and financial resources through various govt schemes and programs.

2.1.1 Women empowerment and governance:

SATHI has been working for women empowerment from last 12 years as capacity building organization to facilitate grassroots level interventions of members CSOs. Since 2013, it has been working directly with communities on women empowerment and promoting their engagement in local self governance. Learning and experience gained during capacity building and facilitation of grassroots organizations; has been very helpful to us to work on this issue.



We are working on women empowerment through project “Peoples Action for Integrated Development (An Initiatives for Empowering Rural Women)”-PAID ERW. Our work is focus to improve the life situation of 12 Gram Panchayats women of Haringtonganj block in Faizabad district. This intervention is supported by MISEREOR/KZE, Germany. Women from 1683 target families are collectivized in form of women CBOs named Nari Sangh and engaged in a) progressive realization of entitlements b) Actively participating in local governance system and c) Knowledge building & information dissemination. Among them 104 members are in leadership position facilitating/leading women issues with relevant stakeholders. 1558 families from these families benefitted from different govt. schemes and program like MGNREGA, PDS, and Labor welfare, SBM etc.

Strengthening the women's leadership and their community-based organizations (CBOs) to work on the most critical/emerging/currently relevant issues those are directly related to entitlements, women's identity, gender equality, health care, nutrition, sanitation and functional literacy.

2.1.2 Sustainable Livelihood

Sustainable Livelihood is one of the major concerns for marginalized communities. While working with Nari Sangh; it has been observed and felt that families have limited option for seeking employment and livelihoods. We with the perspective of Nari Sangh families; designed intervention to work on Agriculture based Sustainable livelihood along with other entitlements realization. This intervention is part of women empowerment initiatives (PAID ERW) and being implemented in same 12 Gram Panchayat and Nari Sangh families of Harringtonganj block. Member's of Nari Sangh is main beneficiary of the intervention and its aim to promote to them as women farmers. This intervention provides opportunity and scope to them for improving their socio-economic conditions for development.

“Bringing positive changes in lives of small and marginal farmer families by advancing agriculture practices and enabling women to come forward for their identity and avail opportunity for development”

Our focus intervention strategies are for women centric sustainable livelihood program and women empowerment intervention is as following

i) Women's mobilization and engagement:

- Collectivizing women from small and marginalized families in each GP in form of CBO named Nari Sangh.
- Promoting women participation in decision making process at families, society and local PRI level

ii) Women's knowledge /capacity building:

- Conducting knowledge building sessions on different govt. schemes & program and agriculture technologies



- Crop improvement – conduct trainings and associated demonstrations & promotion of different sustainable agriculture technologies/ practices to enhance crops yield (Cereals, Pulses & Vegetables etc)

iii) Running WFRC in each GP:

- Establishing Women farmer Resource Center-WFRC for promoting agriculture based livelihoods.
- Providing information and tools for income generation activities
- Promotion of eco friendly cultivation practices among farmers.

iv) Engaging women with relevant govt departments and schemes/programs:

- Facilitating Nari Sanghs to address the basic needs of families through realization of entitlements
- Facilitating interaction and linkages with different technical and financial institutions

Women leadership managing and operating to 12 GP level established Women Farmers Resource Centers-WFRC named Sabla Sansadhan Kendra. 787 Nari Sangh families adopted the advance agriculture technology and improved their income more than two times from previous income.

Under this program intervention category we are also implementing a project “Sustainable Livelihood and MGNREGA”. This project is supported by **Samaj Pragati Sahyog, Madhya Pradesh (Funding support from Ford Foundation, New Delhi)**. Project aim to strengthen job seekers through knowledge building and facilitating to them work to get benefit from MGNREGA. And enhancing the economic condition of the small and marginal farmers by optimum utilization of the assets provided to them under MGNREGA. Training sessions, regular base knowledge building session and exposure visit conducted for job seekers. This intervention created platform at Gram Panchayat and block level, where they put their view/issues of MGNREGA implementation.

Key accomplishment and achievements:

Women Empowerment (PAID ERW project)

- ⇒ 162 Nari Sangh families benefited from govt Awas schemes (Indira Awas, PM Awas etc).
- ⇒ 31 Nari Sangh members benefitted from Pension schemes (Old age, disability and widow pension).
- ⇒ 383 Nari Sangh families constructed toilet under Swaksha Bharat Mission-SBM.
- ⇒ 8 Nari Sangh families received support under Shadi Anudan scheme.
- ⇒ 140 families benefitted from Janani Suraksha Yojana-JSY.
- ⇒ New Ration Card prepared of 103 Nari Sangh families.
- ⇒ 371 women labor registered under labor registration of labor department.

- ⇒ 7 Nari Sangh families received support of scholarship for their child education.
- ⇒ 79 street light installed in target communities by Gram Panchayats.
- ⇒ 1661 Nari Sangh families received regular ration with fair quality, price and weight
- ⇒ 119 Nari Sangh become literate.

Sustainable Livelihood intervention (PAID ERW Project)

- ⇒ 254 farmers adopted System of Rice Intensification-SRI and SWI (System of Wheat Intensification) method.
- ⇒ 14 Famers adopted Machan method for multi cropping & vegetable cultivation.
- ⇒ 122 Farmers adopted on-bed cultivation method.
- ⇒ 54 Farmers adopted vegetable farming through stacking method.
- ⇒ 149 Farmers adopted cultivation on merh/ram.
- ⇒ 3 Farmers adopted floriculture (Flower cultivation).
- ⇒ 781 Farmers registered on govt farmer's registration portal.
- ⇒ 105 families started micro-enterprise(Milk and milk product-12, Fishries-9, Bee keeping-8, Vegetable & Fruit shop- 10, General store-10, sewing-10, Goat rearing-7, pottery-12, and others)

Sustainable Livelihood and MGNREGA project

- ⇒ 1346 MGNREGA job card holders organized.
- ⇒ 2 Gram Panchayat-GP level interface conducted with Gram Pradhan, Rojgar Sewak, and Job seekers group in 10 GP.
- ⇒ 2 Block level interface conducted with Gram Panchayat representatives, BDO, MNREGA APO, ADO Panchayat, Nari Sangh on the issues of MGNREGA implementation.
- ⇒ Job seekers group prepared 10 days job calendar.
- ⇒ 28 job seekers families started goat rearing, tea stall, and grocery shop from the saving MGNREGA work.
- ⇒ Orientation, facilitation and exposure visit conducted/provided to job seekers on MGNREGA guideline and implementation.
- ⇒ Average man days under MNREGA work for this financial year has been 51. It has been improved from last year average man days-31. 41 Job card holders completed 100 days work.
- ⇒ One women mate recruited by the effort of Nari Sangh and one disable person get work under MNREGA for caring of labors child.
- ⇒ Total 10 ponds renovated under MGNREGA work.
- ⇒ Plantation work has been done in 8 Gram Panchayats.
- ⇒ 6 farmers benefited from agriculture field leveling work under MGNREGA.

Some case studies of Sustainable Livelihood intervention



Mrs. Rajkumari

Mrs. Rajkumari is the member of Women CBOs (Nari Sangh) live in Bhitari Gram Panchayat of block Harringtonganj, Faizabad. She did labor work under MGNREGA and other opportunity got in her village. Her family has 1.5 acre agriculture land but didn't focus on agriculture because of non-profitable agriculture. She faced different challenges because of poor income.

In the facilitation of SATHI team, she planted gourd, lady finger and onion on only 500 sq meter land through Machan model. She got net return of Rs. 47,000/- from this land. This was changing moment for her family. She never expected to get huge benefit from. Now She planted banana, Paddy by SRI (System of Rice Intensification) and Vegetable farming. She feels good to hear women farmer.



Mrs. Sunita

Mrs. Sunita is members of Damdar Nari Sangh (women CBOs) lives in Gram Panchayat Nimdi, block Harringtonganj, Faizabad. She belongs to small marginal farmer's families. Her husband, Mr. Ramkumar did taxi driving work in Mumbai but he came back to his villages because of families problems and started to agriculture with his small land. Because of poor production from agriculture family also do labor work.

Sunita heard about modern agriculture pattern during Nari Sangh meeting and shared the same with her husband. Sunita and her husband visited at Women Farmers Resource Center and knew more about tomato farming. On 1000 sq meter land, she planted tomato and received net profit of Rs. 46,290/-. Now her families focused on adopting other profitable agriculture. Sunita is very pleased that she have sustainable income generation source in her village.



Mrs. Urmila

Mrs. Urmila is the member of women CBOs (Nari Sangh) and lives in village poore Belabhari, Gram Panchayat Nimadi, block Harringtonganj, Faizabad. She belongs to marginal farmers' family. Because of low production and non profitable agriculture family members depend on labor and always look for other income generation activity. She heard about profitable vegetable cultivation. Urmila and her husband Mr. Jagannath started cabbage farming on 500 sq. meter land. Total 1700KG cabbage was produced from that land. She received net profit of Rs. Rs.14, 400/- from cabbage production. This benefit has been very helpful to families for children education and fulfilling basic need. Cabbage production promoted to Urmila and her family members to adopt other profitable agriculture farming.



Mrs. Ramkali

Mrs. Ramkali is belongs to marginal farmers family, lives in village Harraipur, Gram Panchayat Hardoiya, block Harringtonganj, Faizabad. The main occupation of her families was animal husbandry and agriculture. She is Nari Sangh member. She was getting information about technical agriculture farming for improving income. But she did not belief on that. One day she visited at other Nari Sangh member's agriculture field to validate the story of profit from small landholding. Then she had visited at established women farmer resource center and got more information about vegetable farming. Finally she decided to do chilly farming on 500 square meter land. Her husband Mr. Nanhe supported to her in chilly farming. She has done nursery of chilly on bed and then planted it to in land. Total 610 KG chilly produced from this. She received net profit of Rs. 32,890/- from chilly production.

Intervention in eyes of Camera

Women Empowerment & Governance



Intervention in eyes of Camera

Sustainable Livelihood



2.1.3 Health & Nutrition

Good health is real wealth, and it makes peoples to happier. Healthcare is a Right of each individual. SATHI with its commitment to improve the quality of life of women and children's; works towards improving women and children health and nutrition status. Under this program area we implemented "Community Engagement and Leadership Development" and "Engaging Champions to Expand Access to Improved and Quality Family Planning in Uttar Pradesh" projects. These projects implemented with the support of Global Health Strategies-GHS.

Community Engagement and Leadership Development project is implemented in Jhansi and Allahabad districts with the coverage of 2 blocks and 135 Gram Panchayats. This intervention is focused on strengthening the health services those are for Reproductive Maternal New born Child and Adolescent health-RMNCH+A. To strengthen the health services, we engage to local community leaders, PRIs, elected representatives, religious leaders and sensitize to them to work on this issues. They work towards strengthening Village Health Sanitation and Nutrition Committee-VHSNC and regular conduction & celebration of Village Health and Nutrition Day-VHND. Panchayat members, elected & religious leaders become sensitized on their role and responsibility for improving health. Now they will conduct awareness, branding of health facility monitoring and follow-up activities for RMNCH+A.

Key accomplishment and achievements:

- ⇒ 5 interface meeting conducted with Gram Pradhans, health departments, ICDS departments, BDO, ADO and other elected & government officials on improving the quality health & nutrition services at village level.
- ⇒ 34 religious leaders has been identified and facilitated to create awareness among communities on importance and health & nutrition services. These religious leaders working towards increasing community participation for health & nutrition services.
- ⇒ 22 dysfunctional health sub-centers has been renovated and along with these 21 total 31 sub-centers now health & nutrition services being provided to community from there.
- ⇒ Village Health and Nutrition Day-VHND sessions have been regularized with quality parameters in each 135 Gram Panchayats of project intervention area.
- ⇒ According to new guideline of government Village Health Sanitation and Nutrition Committee-VHSNC has been formed in 66 Gram Panchayats.
- ⇒ Interdepartmental meeting is being conducted on regular basis on the issues of improving health and nutrition services. Total 4 Interdepartmental meeting has been conducted in the participation of health, education, Panchayati Raj and ICDS department.

- ⇒ MLA Korwan and MLA Bamaur visited at VHND session, sub-center and interacted with Gram Pradhan, MOIC on health services. Total 4 visit conducted by honorable MLAs.
- ⇒ 74 Gram Pradhan conducts regular monitoring of VHND sessions and fill VHND monitoring format.
- ⇒ 28 Gram Pradhans inaugurate VHND session regularly.

Intervention and success in eyes of Camera



2.2 Promoting Philanthropic Initiatives through capacity building of civil society

Promoting Philanthropy Initiatives is one of the program intervention areas of SATHI. SATHI, itself believes that long-term impact can be brought with the efforts of each development actors. Civil Society Organizations-CSOs and grassroots development professionals are the major actors to mainstream the development process. SATHI is committed to build development perspective among potential development actors as communities, civil society group and civil society individuals. This intervention's aim is **team building called Karyakarta Nirman** for catalyzing and facilitating effective development process. SATHI engage with CSOs, communities and entry level professionals to create change agent and work to build leadership among communities, civil society groups and development professionals.

We bring small CSOs together to district level inform of SATHI District Forum-SDF for mutual dialogue and cooperation. Currently 469 grassroots level organization are the members from 40 SDFs. Since inception of SATHI, it is working with grassroots level organization to strengthen organization development, build thematic expertise and execute various development models. This process supported many grassroots organizations to enhance their capacity, improved organization development process and thematic expertise.

2.2.1 Institutional Strengthening of Civil Society Organizations:

Currently, SATHI is working towards institutional strengthening of civil society organizations, with the support of Tata Trusts. This capacity building program "Creating Regional Hubs for institutional strengthening of civil society organization in Uttar Pradesh" has been conceptualized & designed based on evolving needs, expectation of organizations and current due-diligence requirement. This intervention has planned to provide training and mentoring support to 400 grassroots civil society organizations-CSOs from 40 districts for their institutional strengthening. SATHI created 5 Regional Hubs-RHs (named Purvanchal, Tarai, Vindya, Awadh and Bundelkhand regions) to reach out at CSOs level as well facilitate institutional strengthening process easily. Institutional strengthening process is being conducted with 400 CSOs in 2 parts. **First part** of intervention has been conducted in Purvanchal and Tarai Regional Hubs with the coverage of 17 districts and **Second part** intervention process has been started in 3 Vindhya, Awadh and Bundelkhand regions with the coverage of 23 districts from November, 2018. Agenda of institutional strengthening to CSOs is following on which training, mentoring/handholding support is being provided.

i) Visioning and perspective building

ii) **Basic HR & Finance:** Organizational governance and mandatory legal compliances and basic HR

iii) **Advance HR & Finance:** Finance and Human Resource Management

iv) Basic MIS & Sustainability: Organizational & Program planning, Management Information System

v) Advance MIS and Sustainability: Resource mobilization and visibility promotion
Regional Resource Group-RRG has been formed to facilitate the training and mentoring activities. These members from RRG are trained on institutional strengthening agenda. Reflections and achievement from first two regional hubs intervention has been encouraging for us.

Key accomplishment and achievements:

Regional Hub Purvanchal and Tarai

- ⇒ Mentoring and handholding support provided to 193 CSOs on basic MIS and Sustainability module.
- ⇒ Training cum workshop conducted with 184 CSOs on Advance MIS and Sustainability module.
- ⇒ Mentoring and handholding support provided to 185 CSOs on Advance MIS and Sustainability module.
- ⇒ 201 CSOs prepared and displayed Vision and Mission statement of their organizations.
- ⇒ 201 CSOs developed Human Resource and Finance Management Policy of their organizations.
- ⇒ 81 CSOs prepared fundraising/sustainability plan of their organizations.
- ⇒ 65 CSOs established Management Information System-MIS at their organization level.
- ⇒ 120 CSOs become registered on NGO Darpan portal.

Regional Hub Vindhya, Awadh and Bundelkhand

- ⇒ 204 grassroots level CSOs identified from next 3 Regional Hubs-RHs (23 districts).
- ⇒ Training of Trainers-ToT conducted with 20 resource group members to facilitate upcoming training and mentoring supports.
- ⇒ Visioning and Perspective building workshop conducted with 202 CSOs.

Intervention in eyes of Camera





2.2.2 Strengthening civil Society Engagement in Bundelkhand :

With the core commitment to create change agent, we engaged with fresh graduates of Mahatma Gandhi Chitrakoot Gramoday Vishwavidyalay-MGCGV to promote & foster voluntary spirit and professional skills required for effective development process. These fresh graduates engaged with us as Gramoday Fellows for strengthening civil society action in Bundelkhand (named Gramoday Fellowship Program). In the collaboration of MGCGV and Tata Trusts, SATHI provided support to them for welcoming their contribution in civil society actions. Through training program and workshop and field level activities SATHI facilitated them on thematic issues, social analysis, conceptualization & program development, community mobilization strategies, program management and institutional management.

8 Gramoday Fellows were engaged with us in this year (2017-18). In which all 8 Gramoday fellows is working with their own organization in Bundelkhand. Through this program total 21 fresh graduates benefitted and prepared as an effective development actor. Among

them 12 are working with their own organization (established during fellowship period) and others are working with existing local organizations.

Key accomplishment and achievements:

- ⇒ Mentoring and handholding support provided to 8 Gramoday Fellows of batch-II.
- ⇒ Capacity building input provided to Fellows on organizational governance, Human Resource Management and basic of finance management.
- ⇒ Annual Review and Reflection workshop conducted with Gramoday Fellows, local CSOs, University representatives and SATHI.
- ⇒ 8 Fellows of batch-II started to work in Bundelkhand with their established organizations (society/trust)

Case Studies of fellowship program



Ms. Nidhi Gupta is Social work post graduate from Mahatma Gandhi Chitrakoot Gramoday Vishwavidyalay-MGCGV. She joined us as Gramoday Fellows for batch-II in July, 2015 and completed her fellowship in June, 2017. During fellowship

period, she formed an organization named **iHEL** Foundation in district Banda and registered under Indian Trust Act, 1882. After the completion of fellowship; she is working in 2 Gram Panchayat of Banda district with the focus of adolescent girl's health & hygiene. Currently she is also working towards organization development.



Ms. Amrita Tiwari

Ms. Amrita Tiwari is Social work post graduate from Mahatma Gandhi Chitrakoot Gramoday Vishwavidyalay. She joined us as Gramoday Fellows for batch-II in July, 2015 and completed her fellowship in June, 2017. During fellowship period, she formed an organization named **NIDAN** Foundation in district, Banda under India Trust Act, 1882. Currently she is working with Sakhi One Stop center, pilot program of govt; in district Jhansi. And with the support of volunteers **NIDAN** Foundation working to create awareness among communities on women health issues.



Mr. Abhishesh Singh Patel has done post graduation from MGCGV, Chitrakoot. He joined Gramoday Fellowship just after completing post graduation and completed his fellowship in June, 2017. With the aim to address livelihood need of Bundelkhand region; he started work on addressing livelihood through modern and technical agriculture promotion. He has established an organization named **DISHA** Foundation under Societies Registration Act 21, 1860 and working in his

Mr. Abhishesh Singh Patel

home district Banda. Currently, he is working on Agro-based livelihoods and digital literacy.



Mr. Anoop Diwedi

Mr. Anoop Diwedi is post graduate from MGCGV, Chitrakoot. He joined us as Gramoday Fellows for batch-II in July, 2015 and completed his fellowship in June, 2017. During fellowship period, he established a society "AVDAAN Foundation" in district Hameerpur. Currently, He is working with Room to read India as development professional. He has collectivize volunteer group, those working in Maudaha block of Hameerpur for promoting primary education and health awareness.

Intervention in eyes of Camera



2.2.3 Certificate Program in Rural Livelihood-CPRL

SATHI facilitated CPRL program with Tribal Rural Professionals on “Rights and Entitlements” module. This Certificate program is an initiative of Bharat Rural Livelihood Foundation-BRLF and IIHMR University. Overall objective of this program is capacity building of tribal rural professionals on Rural Livelihood. Programs have planned 13 learning modules. In which “Rights and Entitlements” is one of the module that has been facilitated by us.

In the partnership with “People’s Action for National Integration-PANI” we developed training module for Right and Entitlement: Right Based Approach to development, Social Analysis & community mobilization and facilitation, Government flagship schemes and People Centered Advocacy. 2 batches training facilitation conducted by us. In which total 57 Tribal Rural Professional participated and benefitted from the training input.

Key accomplishment and achievements:

- ⇒ Training provided to 57 students of CPRL-I & II on Right Based to Development.
- ⇒ Training provided to 57 students of CPRL-I & II on Social Analysis and community mobilization & facilitation.
- ⇒ Training provided to 57 students of CPRL-I & II on Govt. Acts and Flagship Schemes directly linked to entitlements.
- ⇒ Training provided to 57 students of CPRL-I & II on People-centered advocacy.

Intervention in eyes of Camera





2.3 Issue Based Advocacy and Networking

SATHI is a platform of grassroots organizations promoting mutual dialogue, friendship and cooperation. The SATHI presently has 469 CSOs of 40 districts as members. Our networking with grassroots level organization is based on our core ideology "Friendship-Dialogue-Cooperation." Aim of networking and advocacy is "Providing mutual support and technical & thematic assistance" to CSOs and Advocacy with concern institution to "deal with emerging needs of communities". SATHI facilitate issue based advocacy and networking through its decentralized structures viz. 5 Regional Hubs-RHs and in each region by the SATHI District Forums-SDFs. It also engaged with CSOs on issue specific themes/interventions.

SATHI District Forum (SDF):

SATHI-UP has successfully introduced the concept of District Forum (SDF) in 1997-98. The forums are autonomous unit and with their own agenda for discussion. The induction and termination of membership of any organization are completely depending on District



Forums. The district forums have 10-12 member organizations in an average per districts. CSOs meet on regular interval basis in their SDFs and discuss various aspects of institutional development and programmatic issues.

SATHI Regional Hubs:

Regional Hubs are also autonomous structure and established in the representation of SATHI District Forum. It has been conceptualized to decentralize the role of SATHI, provide thematic, technical and institutional support to CSOs in geographical and social context, and create group of thematic expert at Regional level. In the view of geographically and socially context and representation 40 SDFs 5 Regional Hubs formed as RH Tarai (Indo - Nepal border), RH Purvanchal, RH Vindhya, RH Awadh and RH Bundelkhand.

Networking with 60 CSOs from 20 districts for Family Planning issue:

Engaging Champions/CSOs to Expand Access to Improved and Quality Family Planning in Uttar Pradesh project is being implemented under issue based networking and advocacy program. 60 grassroots level CSOs of SATHI network from 20 districts are engaged with this initiatives. These 20 districts come in high TFR (Total Fertility Rate) category and under MPV districts (Mission Pariwar Vikas). This intervention is supported by the **Global Health Strategies-GHS**. SATHI as lead organization engaged with 60 grassroots level civil society organizations and capacitated to them on government schemes and programs, latest evidence in family planning to address myths and misconceptions in the community and advocacy tips to raise the issues related to reach and quality of family planning services in block and district level health forums. Regional level and districts level training cum workshop has been conducted with CSOs representatives to build their capacity. These 60 CSOs worked towards strengthening the implementation of family planning services at village, block and district level through family planning messaging and feedback sharing.

Objectives of this intervention is as following

- Improving access to correct and complete information on current family planning programs and schemes including entitlements and compensation packages
- Building a more conducive environment for FP by addressing myths and misconceptions around FP methods specially spacing methods and by promoting delay in age at marriage, delay in first pregnancy, adequate spacing between two pregnancies and adoption of family planning by younger couples
- Improving access to FP services through advocacy at community, block and district levels by family planning champions drawn from both public and private sector

Key accomplishment and achievements:

- ⇒ Regional training workshop conducted with 40 CSOs representatives of 20 districts on Family planning messaging and advocacy.

- ⇒ 4 district level trainings/workshops conducted with 61 CSOs from 20 districts on Family planning messaging and advocacy.
- ⇒ 48 Family Planning Champion has been indentified amongst CSOs, Women CBOs, FLWs, FP clients and government providers. And they are actively engaged in family planning messaging and advocacy activities.
- ⇒ Partner CSOs conducted media workshop at 6 district level and discussed on male participation in family planning, media role to create awareness.
- ⇒ Family Planning Sensitization and awareness generation workshop conducted with MLA, Lambhuwa, Sultanpur.
- ⇒ Sensitization workshop conducted with Gram Pradhans in 2 districts.
- ⇒ 79 community based sensitization and awareness generation activities conducted by the partner CSOs in their field intervention area on the issues of birth spacing, delay in marriage, male involvement, voluntary choice and importance of family planning.
- ⇒ 7 block/district level sensitization meeting conducted with health department and front line workers by the partner CSOs.

Intervention in eyes of Camera





4. Financial summary

Income & Expenditure for Financial Year 2017-18			
Expenditure	Amount (INR)	Income	Amount (INR)
Personnel Cost	58,025.00	Consultancy Charge	94,500.00
Programme Cost		Donation	50,000.00
General	3,97,420.00	Contribution from SDF member	2,97,600.00
Strengthening civil society engagement in Bundelkhand	5,15,073.00	Membership Fees	4,200.00
Creating Regional Hubs for institutional strengthening of CSOs in UP	37,58,795.00	Training Registration fee	2,83,100.00
People's Action for Integrated Development-PAID (An Initiative for Empowering Rural Women)	17,37,406.00	Bank interest received from SB a/c	22,300.65
Submission on Agriculture extension	3,08,300.00	Establishment expenses	19,666.00
Capacity Building Initiatives for Tribal Youth	10,72,277.00	Grant received for Creating Regional Hubs for	21,13,000.00

(CPRL Prog.)		institutional strengthening of CSOs in UP	
Community Engagement and Leadership Development	22,57,865.00	Local Contribution received for Creating Regional Hubs for institutional strengthening of CSOs in UP	66,093.00
Engaging Champions to expand access to improved quality Family Planning in UP	7,67,965.00	Grant received for People's Action for Integrated Development-PAID (An Initiative for Empowering Rural Women)	16,57,072.00
Sustainable Livelihood and MGNREGA-SLAM	7,05,292.00	Local Contribution received People's Action for Integrated Development-PAID (An Initiative for Empowering Rural Women)	80,170.00
FC General (Establishment)	1,273.35	Grant received for Submission on Agriculture extension	3,08,300.00
Depreciation	1,10,816.00	Grant received for Capacity Building Initiatives for Tribal Youth (CPRL Prog.)	8,03,395.00
Excess of Income over Expenditure transfer to Capital Fund	2,37,121.30	Grant received for Community Engagement and Leadership Development	20,53,709.00
Overhead cost	75,527.00	Grant received for Engaging Champions to expand access to improved quality Family Planning in UP	8,50,000.00
Total	1,20,03,155.65		

5. Our Funding partners/Associations/Linkages

SATHI's funding partners for FY 2017-18 are

1. Sir Ratan Tata Trust, Mumbai
2. Tata Education Trust, Mumbai
3. Peoples Action for National Integration-PANI (For MISEREOR/ KZE Germany and Bharat Rural Livelihood Foundation-BRLF supported project)
4. Global Health Strategies Emerging Economics Pvt. Ltd
5. Samaj Pragati Sahyog-SPS, M.P. (For Ford Foundation supported project)

Associations & Linkages

- Association of Voluntary Agencies for Rural Development-AVARD, New Delhi
- Voluntary Action Network of India-VANI, New Delhi
- Uttar Pradesh Voluntary Action Network-UPVAN
- Indian Social Responsibility Network-ISRNI, New Delhi
- GuideStar India
- Charities Aid Foundation-CAF, India, New Delhi
- Digital Empowering Foundation-DEF, New Delhi
- Wada Na Todo Abhiyan, New Delhi
- Center for Promoting Accountability-CPA Services, New Delhi
- Financial Management Service Foundation-FMSF, Noida



6. Governing board at SATHI

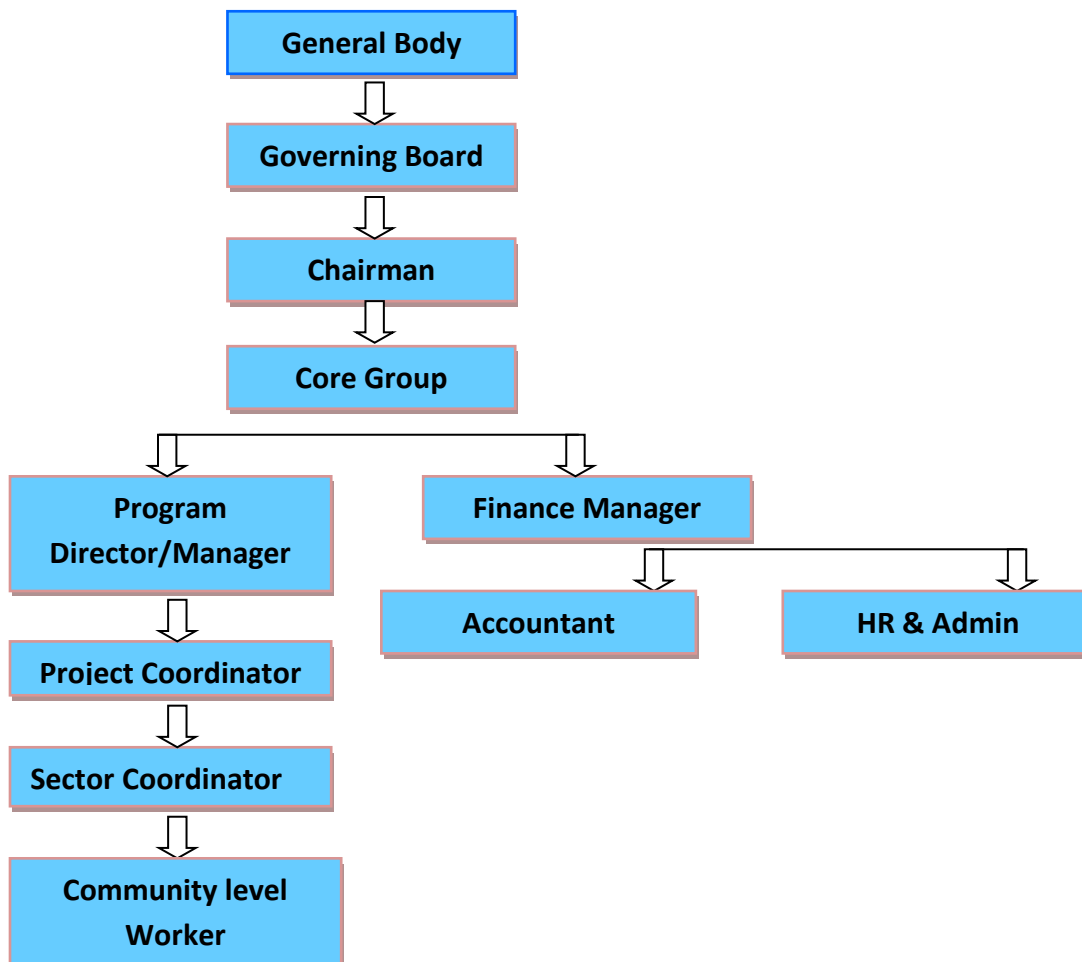
S. N.	Name	Age	Gender	Address	Contact Number	Position in Governing Board	Date of joining Governing Board	Relation to Governing body Members	Occupation
1	Mr. Shashi Bhushan	61	Male	4044/3, Civil Lines, Near Saliha Hospital, Faizabad, Uttar Pradesh-224001	9415140215	Chairman	23 rd October, 2008	No	Social Work
2	Mrs. Savita Suman	51	Female	Jameen Beruki, Chakra, Haldharpur, Maunath Bhanjan, Mau, Uttar Pradesh-121705	9452284443	Vice chairman	14 th August, 2009	No	Social Work
3	Mr. Girjesh Pandey	65	Male	483, Jawahar Nagar, Unnao, Uttar Pradesh-209801	9415135645	Secretary	31 st July, 2004	No	Social Work
4	Mr. Rajdev Chaturvedi	54	Male	Bilari mu. Ajagara, Badhaya, Azamgarh, Uttar Pradesh- 223223	9451113651	Treasurer	29 th June, 2014	No	Social Work
5	Mr. Girdhari Bhai	57	Male	62F/14A, Rajapur, Allahabad, Allahabad, Uttar Pradesh- 211001	9935063099	Member	31 st July, 2004	No	Social Work
6	Mohd. Nasim Ansari	54	Male	Prithviganj Bazar, Ramaipur Disni, Patti, Pratapgarh, Uttar Pradesh-230135	9415230412	Member	31 st July, 2004	No	Social Work
7	Mr. Shamim Abbashi	54	Male	63, Sujawalpur head post office, Ghazipur, Uttar Pradesh- 233001	9415281073	Member	14 th August, 2009	No	Social Work
8	Mrs. Kiran Baheti	52	Female	Town & Post Jagdishpur, near Ramlila Maidan, District- Sultanpur, Uttar Pradesh	9415381180	Member	14 th August, 2009	No	Social Work
9	Mrs. Kshama Singh	38	Female	8/4/20G, Jharkhandi, Faizabad, Uttar Pradesh-224001	8960731641	Member	29 th June, 2014	No	Social Work
10	Mr. Jagdish Giri	45	Male	Kashipur, Azamgarh, Uttar Pradesh-276141	9935748481	Member	29 th June, 2014	No	Social Work
11	Mr. Daya Shankar	53	Male	Kewshav Nagar Shiva Colony, District- Basti, Uttar Pradesh	9450575727	Member	29 th June, 2014	No	Social Work

7. AGM and Governing board meeting

Detail of Annual General Body Meeting (AGM) and Governing Board-GB meeting held in FY'2017-18

S.N.	Nature of Meeting (AGM/GB)	Date
1.	Governing Board Meeting	29.07.2017
2.	Governing Board Meeting	05.02.2018
3.	Annual General Body Meeting	29.07.2017

8. Organogram



9. Validation and Certification

Certified by GuideStar India for Champion Level- GuideStar India Platinum



Charities Aid Foundation-CAF India [Certificate of Validation]

