

SPAN ANNUAL REPORT 2022 – 2023

SPAN's contribution towards achieving SDG



Society for Peoples' Awareness



Registered Office : 66/2, Sarat Chandra Dhar Road, Kolkata – 700090

Head Office : 127, Gorui Paschim Para, Kolkata – 700065

Email – info@spanvoice.org

Website – <https://spanvoice.org>

Phone – 9331992897

ANNUAL REPORT 2022 – 2023



Society for Peoples' Awareness

Contents

| | |
|---|---------|
| Message from Secretary | 2 |
| Background | 3 |
| SPAN's Theory of Change | 3 |
| SPAN's Reach | 4 |
| Program Activities | 6 - 21 |
| ≡ CHILD RIGHTS | 6 |
| Early Childhood Care and Development (ECCD) | |
| Education | |
| Child Protection | |
| Children's Participation | |
| Change Story | |
| ≡ YOUTH | 12 |
| Youth-Led Development | |
| Youth and Livelihood | |
| Youth and Governance | |
| Climate Action by and for the Youth | |
| Change Story | |
| ≡ WOMEN | 18 |
| Women in Development | |
| Women Livelihood | |
| Women and Governance | |
| Women Action | |
| Change Story | |
| Good Practices | |
| ≡ Anandadhara Shikshayatan | 22 |
| Campaign and Networking | 24 |
| SPAN's Partners in Development | 25 |
| Policies adapted and followed by SPAN | 26 |
| Legal Status | 26 - 27 |
| ≡ Registration of SPAN | 26 |
| ≡ Governing Body Members of SPAN | 26 |
| ≡ Organogram | 27 |
| Financials | 28 - 30 |

Message from Secretary

Dear friends and colleagues,

It is time now to look back, and since the beginning of this year, which certainly mark the post-COVID situation revealing certain practices and beliefs as outmoded posing certain challenges to imagine afresh. This has been broadly suggested by the researchers, academicians, journalists' viewpoints, historians, and social analysts that COVID has opened new horizons of understanding of the dynamics replacing the traditional thoughts, especially in the fields of education, health, nutrition, livelihood, and natural resource management.



Added to this, the world has seen the disasters causing humanitarian crisis, including unbridling wars causing everlasting distress and destitute.

All these together caused many of the progresses, which the governments of the underdeveloped and the developing countries claimed to have achieved, got watered down due to the pandemic and exigencies.

People, as a result, are losing control over their situation and their social life getting disgruntled. The institutions, though, it all meant for the people's attainment of basic support, became weakened. Amid this, it is the children, who are the most sufferer, while the young people and women, especially, become the victims of immoral acts and distrust.

SPAN kept all its channels of understanding the society and the community open and with a clear perception of getting all lost confidence of the people back and restore those to move forward. The climate perception and sustainability angle are the two dimensions added to our knowledge dissemination actions.

These holistic efforts have been supported by the people, local self-government (Gram Panchayats), Administration (Block, Districts, Police, Social Welfare and other relevant Ministries and departments), CSOs, CSRs and most importantly the International Support Agencies, who have had a complete trust on our capacity and sincerity.

I convey my best regards to all such people, agencies and friends, stood by our side.

Prabir Basu
Secretary

Background

The year was 1989. United Nations Child Rights Convention (UNCRC) happened this year. “**(SPAN) Society for Peoples’ Awareness**” established in the same year to uphold the rights of the children, to ensure that wellbeing of a community could only be resolute if wellbeing of the children become of paramount importance.

Hence, needs and aspirations of the excluded communities dealt to a logical end leads towards ensuring all rights of all children in a community with an active involvement and ownership of Youth, women, children, and occupational groups, who are being accountable in accomplishing the same.

SPAN touched almost all vulnerable districts, e.g. the tribal villages, people living in forest villages, in the international border villages, on hill tops, almost inaccessible and not having an all-season road and communications, people in the coastal and delta regions facing frequent adversities of nature, and the urban settlers, labeled as encroachers, street and slum dwellers.

Thus, SPAN has a strong team of staffs and community organizers, who are committed to the cause and focus on change in the life of the community, and by believing so, SPAN essentially drive home an idea of a society that is economically productive and equitable, socially just, environmentally sound, and genuinely democratic.

Alongside, SPAN worked closely, collaborating with the institutions, departments and Ministries revealing the grassroots’ experience and working on the possibilities to meet the people’s immediate and long-term needs and aspirations.

SPAN’s Theory of Change

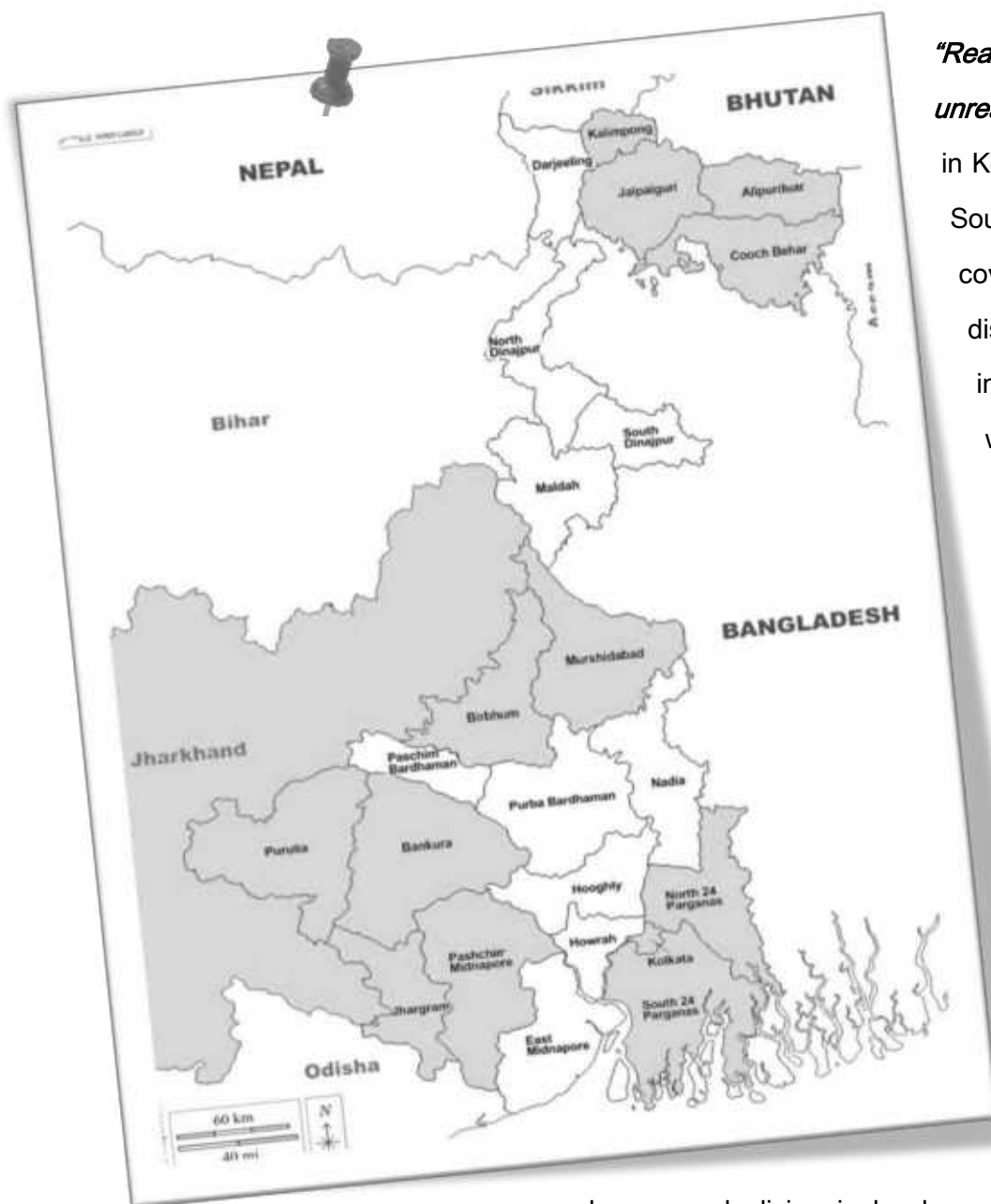
Leadership emerge from amongst the victims, which in turn would collectively address the vulnerabilities, gets associated, assembled and form council to work as partners with various stakeholders and the institutions to bring about change. Collective knowledge streamed with people’s ownership of the issues and its treatises. Thus, they can rationally put their findings against the SDG matrix to voice their aspirations.

Reason behind Use of Theory of Change in SPAN’s Context

SPAN believes strongly that the target groups must get involved in the process of change through cause-and-effect analysis. Explore the possibilities relying on their collective and confidence to come up with a doable plan and action. An approach towards moving on will be tested through the lens of its effectiveness, feasibility, and uncertainties those are the part of any process of change.

SPAN's Reach

Reaching the unreachable



“Reaching the unreachable” from slums in Kolkata to villages of South to North Bengal, covering twelve districts, which includes southern, western, and northern districts including Kolkata and evidently is characterized by its remoteness, villages inhabited by tribals, forest dwellers, minorities and Dalits, tea garden tribal

workers, people living in border areas and slum and street dwellers in the urban setting.

SPAN Annual Report 2022 – 2023

The following table summarizes the geographical coverage of SPAN's intervention:

| State | District | Block/Municipality | GP / Ward / TG | Name of the Village |
|-------------|-------------------|--------------------|--------------------|---|
| WEST BENGAL | Purulia | Jhalda-II | Tatuara | Tatuara, Dulmi, Damruguthu, Chorgali |
| | | Bagmundi | Tunturi-Suisa | Parshidi, Tunturi, Marcha, Shimali, Pirorgoria, Suisa |
| | Jalpaiguri | Matiali | Batabari – I | Dangee, Satkiya |
| | | | Matiali Hut | Killcott, Samsing, Nageissuri |
| | North 24 Parganas | Nagrakata | Champaguri | Nayasylle, Hilla, Nagrakata, Thaljhora |
| | | | South DumDum(M) | 3, 4, 5 |
| | | | Kamarhati(M) | 1, 2, 3, 4, 5, 6, 7 |
| | | | Titagarh(M) | 4, 5, 7, 9 |
| | Kolkata | KMC | Barrackpore(M) | 13, 16, 17, 18 |
| | | | | 3, 5, 6, 36, 38 |
| | South 24 Parganas | Basanti | Basanti | Kalidanga |
| | | | Jyotishpur | Ballartop, Radharanipur, Jyotishpur, Chandkhali |
| | | Pathar Pratima | Gopal Nagar | DakshinGopalnagar, Durbachati, Krishnapur |
| | | | Durbachati | Mahendranagar |
| | Alipurduar | Madarihat | Lankapara | Makrapara |
| | | | Dalmohor | Tulashipara |
| | | | Rangalibazna | Gopalpur |
| | Coochbehar | Dinhata-I | Soulmari | Batrigas Fragment, KisamatBatrigas |
| | | Dinhata-II | Nayarhat | Purba & Dakshin Masaldanga |
| | | | Salmara | Karola Chit, Shibaprosad |
| | | Sitalkuchi | Khalisamari | Nalgra, Falonapur |
| | Jhargram | Jhargram | Lodhasuli 11 No.GP | Dalkathi |
| | Paschim Midnapore | Salboni | Salboni | Bulanpur, Maharajpur |
| JHARKHAND | Dumka | Raniswar | Rangaliya | Rangalia (Bamandiha), Kuchidali, Panchpahari |
| | | Shikaripara | Sonadhab | Banskendri (Praniktola) |

Program Activities

SPAN's approach keeps children, while its core areas of interventions encompass (1) Child rights, with a particular emphasis on safeguarding and protecting the safe childhood, educating, and involving urban and rural children to voice their intent, being informed about their rights and entitlements, (2) Introducing a transformative leadership program for young citizens, which helps young people become socially conscious leaders of tomorrow and in the process helps them discover what they are truly meant to accomplish in life, (3) Promoting gender equality as a cross-cutting theme, where women are vocal about their interest and rights, where those, it's evident, are compromised at family and community level, in accessing education, joining economic workforce, adoring dignity and social recognition, and political participation, (4) Analyzing government budgets in Child Rights' lens, and (5) Providing support for community-managed livelihood resources (CMLRS) to positively impact the way of life among rural populations.

CHILD RIGHTS

EARLY CHILDHOOD CARE AND DEVELOPMENT (ECCD)

To address the issues related to ECCD the government of India has been implementing a comprehensive schemes like ICDS.

SPAN engages with ICDS officials and mothers towards strengthening the implementation of the six services of ICDS.

It brings several changes in the behaviour of mothers - visiting ICDS centres, inquiring about their children, and taking initiatives in developing nutrition garden.

- ❖ **Crèche support for children of unorganized women workers in the urban settings :** In



partnership with NKDA and Mobile Crèche, Delhi, SPAN launched a crèche in Newtown Rajarhat in 2021. This empowers working mothers to focus on their jobs while ensuring their children receive essential care and early learning for holistic development.

- ❖ **Crèche support for children of women plantation workers in tea garden :** In 2022, SPAN partnered with the tea garden management to establish a crèche in Killcott, Jalpaiguri, addressing child care concerns for women plantation workers.



Children in SPAN-run crèches receive breakfast, lunch, and evening snacks, along with dedicated time for study and rest on suitable bedding materials.

Following table describes the numerical status of babies covered by both the crèches:-

| Area Where The Crèche Is Situated | Total Number of Children Served | | |
|-----------------------------------|---------------------------------|-------------|--------------|
| | No. of Girls | No. of Boys | Total Number |
| Newtown Rajarhat, Kolkata | 9 | 11 | 20 |
| Kilcott Tea Garden, Jalpaiguri | 21 | 17 | 38 |

EDUCATION

- ❖ **Connecting to School Education** : Post-COVID, SPAN found a significant drop in school attendance in project areas. Addressing this, SPAN collaborated with 14 primary schools in five districts, introducing "JEEVAN PATH," a unique curriculum designed by SPAN scholars to mobilize children and parents.

JEEVAN PATH

Every child deserves quality and equitable education

Focus was on three key objectives:

1. Ensuring quality education for all.
2. Creating a collaborative platform for students and educators.
3. Fostering active citizenship.

In response to the COVID-19 lockdown, SPAN launched "**JEEVAN PATH – a life-oriented process for studying**" across its operational districts. Despite the reopening of schools post-pandemic, SPAN continued JEEVAN PATH in primary schools. Implementation began in three districts, including North and South 24 Parganas, and Purulia.

| District | Block / Municipality | Gram Panchayat / Ward No. | Name of the Primary School / SSK | No. of Students Covered By JEEVAN PATH |
|-------------------|----------------------|---------------------------|----------------------------------|--|
| Purulia | Jhalda – II | Parshidi | Parshidi Primary School | 60 |
| | | Tatuara | Dulmi Primary School | 145 |
| South 24 Parganas | Pathar Pratima | Durbachati | Krishnapur Durbachati | 94 |
| | | Gopal Nagar | Mahendra Nagar Primary School | 197 |
| | Basanti | Jyotishpur | SSK Nazrul | 84 |
| | | Basanti | SSK Netaji | 90 |
| North 24 Parganas | Kamarhati | Ward No. 1 | JP-SPS Hindu UP School | 312 |
| | | Ward No. 7 | Social Welfare Society School | 87 |
| Jalpaiguri | Matiali | Batabari | Kilcott TG Primary School | 67 |
| | | | Dangee Primary School | 76 |
| | | | Sathkiya Primary School | 20 |
| | | | Nagasuri Primary School | 15 |

| | | | | |
|------------|-----------|-----------|--------------------------------|----|
| Alipurduar | Madarihat | Lankapara | Makrapara Primary High School | 54 |
| | | | Makrapara Sukti Primary School | 10 |
| | | Dalmohor | Tulashipara Primary School | 39 |

We prioritize strengthening the public education system over a parallel private system. In JEEVAN PATH, we align modules with government syllabi while incorporating activity-oriented learning strategies. This contextual approach ensures students stay current with their age-specific grades, emphasizing holistic development over rote learning. The module aims to make examinations flexible, integrating them into the classroom environment. Our focus is on fostering an inclusive atmosphere, where teachers and students, irrespective of caste, creed, religion, or gender identity, share a caring concern within the democratic framework of the country.



Local college students are mobilized and trained as Youth-Guides to implement the JEEVAN-PATH module. They work closely with school teachers, playing a multifaceted role as responsible citizens actively engaged in governance to uphold constitutional principles and democracy.

JEEVAN PATH is an ongoing initiative, with plans to launch it in ten schools in Jalpaiguri, Alipurduar, and North 24 Parganas. SPAN is open to expanding this process to more schools based on community needs in our operational areas.

« A Transformation Unveiled: Manish's Journey through "Jeevan Path" »

In the quiet village of Parshidi, nestled in the heart of Baghmundi, lived a fifth-grader named Manish Singh Mura. His world, though remote, was painted with the struggles of his parents, Rashbehari Singh Mura, a daily labourer, and Shakuntala Singh Mura, a skilled craftswoman who made brooms from a special kind of grass.



Despite the challenges, Manish would often venture to school. But school has no console to his life of discomfort. Manish gradually began distancing from his school, would often found engage in illicit activities and getting addicted in substance use with older boys of his village.

SPAN team invited Manish to join the children group activities and Jeevan Path sessions in his school. Primarily Manish glance and take interest, but consistent and compassionate follow up would see the turning point when Manish would agree to join Jeevan Path back in school and to their surprise, Manish turned from a reluctant fifth-grade to an enthusiastic sixth-grader, illustrating the transformative power of education through the "Jeevan Path" program.

- ❖ **Engagement with Stakeholders** : SPAN maintained ongoing dialogues with stakeholders like District School Inspectors, Block Administration, GP members, and teachers, sharing data and addressing challenges at different intervention phases.
- ❖ **Relevant Discussion on Peoples' Understanding of Quality Education** : It enhances people's understanding of the benefits of keeping this generation in school until they complete their school leaving examinations. This year, two parallel activities were conducted : mass sensitization and capacity building of leaders.

Conducted 61 capacity-building workshops to empower urban and rural communities, focusing on improving education outcomes.

The nominated community member facilitated 26 interfaces between the village council leader and government stakeholders.

These interfaces created required place for the village council leaders to share the findings and suggested actions to transform education scenario for best interest of children.

CHILD PROTECTION

Right to Protection of children is an integral part of Child Rights. During reporting year, regarding protection SPAN engaged with the issues related to Child Labour and Child Trafficking.

- ❖ **Child Labour** : Issues of Child Labour in India has its history since a long time ago. SPAN covered five unregistered and registered slums in North Kolkata to address the issue of Child Labour.

The following table summarizes the geographical coverage and thematic data about child labour:

| Name of the Slum/Area | Ward No. under (KMC) | Type of Slum | Children Engaged In Work Covered By SPAN in North Kolkata | | |
|-----------------------|----------------------|--------------|---|---------------|-------------|
| | | | Total Children | No. of Female | No. of Male |
| Amherst Street | 38 | Unregistered | 21 | 14 | 7 |
| Belgachia | 3, 5 | Registered | 48 | 14 | 34 |
| Rajabazar | 36 | Registered | 53 | 38 | 15 |
| Tala | 5 | Unregistered | 7 | 7 | 0 |
| Cossipore | 6 | Unregistered | 31 | 15 | 16 |



Fuelling education through motivation



Workshop addressing issues and challenges

During the reporting year, youth groups consistently interacted with children in labour situations in the mentioned areas. Activities involved identification, creating case histories, developing rehabilitation plans, coordinating with stakeholders for rescue, ensuring formal school admission, and raising awareness in the community about child labor issues and government initiatives for integrating these children into mainstream education.



Camp aiding Tala Park community's basic entitlements



Guardian meeting: Sensitizing parents to educate working children

- ❖ **Child Trafficking** : Child trafficking is a critical issue, especially in border areas, both international and national. SPAN focuses its intervention on child trafficking in Jalpaiguri and Alipurduar, which are significant source areas for labor-related trafficking. SPAN's strategy involves engaging local youth to protect children and raising community

awareness about the causes and consequences of child trafficking. Education, beyond academics, is a key rehabilitation approach for rescued children. SPAN has established 32



youth groups as "Child Rights Defenders" in operational areas, providing ongoing capacity building on situational analysis, relevant government laws, and networking for rescues. In the reporting year, SPAN successfully rescued and integrated **181 trafficking victims** with their families.

**AMONG THE 181
TRAFFICKED SURVIVORS,
170 WERE REHABILITATED
THROUGH CONNECTING
THEM TO SCHOOL**

**37 SENSITIZATION CAMPS WERE
ARRANGED IN THE COMMUNITIES**

**8 CONVERGENCE MEETING HELD
INVOLVING ALL THE STAKEHOLDERS**

- ❖ **Engagement with Stakeholders on Child Protection** : SPAN spearheaded the formation of Village Level Child Protection Committees (VLPCs) across its project areas, providing training on child protection and associated responsibilities. Additionally, SPAN collaborated with the District Child Protection Unit in Kolkata to establish Ward Level Child Protection Committees (WLPCs) within Kolkata Municipal Corporation (KMC) wards. These committees receive regular updates on cases involving vulnerable children and are actively followed up for necessary actions.

CHILDREN'S PARTICIPATION

SPAN prioritizes genuine, informed participation of children, forming Children Groups with governing bodies in all operational areas, totaling 20 groups. These groups undergo regular training on team building, leadership, and group dynamics. SPAN also organizes training sessions on SDGs, climate change, the Indian Constitution, and Child Rights using pre-designed modules. Children actively engage in practical research, visiting block offices, panchayats, health centers, and ICDS to understand various aspects related to child rights. They compile detailed reports based on their experiences.



CHANGE STORY

« Rehan's Journey to Educational Empowerment »

Rehan Ali, a 17-year-old resident of Belgachia, faces financial challenges as his father, Mumtash Ali, works as a daily labourer, and his mother, Rehana Parveen, manages the household. Rehan, the only child, supplements the family income by working at a bag factory from 6 p.m to 10 p.m, earning

Rs 100 per day. This modest income is insufficient for their basic needs, hindering Rehan's ability to afford study materials. Despite these obstacles, Rehan, a Class IX student, is determined to pursue education.

Recognizing his potential, SPAN is intervening to support Rehan's education. By providing books and project materials, SPAN aims to ensure that financial constraints do not disrupt his studies. Regular communication with Rehan and his family, along with monitoring academic progress through collaboration with teachers, is part of the intervention. SPAN's ongoing support aims to empower Rehan, offering a brighter future by overcoming financial barriers to education.

YOUTH

SPAN concentrates on empowering youth by providing training and encouraging leadership in child rights, climate action, livelihood, and governance. This approach aims to foster socially responsible citizens who are not only accountable but also equipped to tackle market challenges by gaining vocational skills.

YOUTH-LED DEVELOPMENT

The goal is to create a space for '**Youth Opinion Matters**' in shaping their lives and advocating for the rights of marginalized individuals in society.



attributed to skill gaps and poverty, and limited youth participation in decision-making processes pose long-term challenges in both India and our operational areas.

Over the past decade, our organization has launched various skill training programs in West Bengal, specifically in Jalpaiguri, North 24 Parganas, South 24 Parganas, and Bankura.



YOUTH AND LIVELIHOOD

India boasts one of the world's largest youth populations, with 253 million adolescents. The Census of India 2011 underscores the significance of this demographic segment, influencing socio-political, economic, and demographic dynamics. The transition from education to economic activity is pivotal for youth, serving as the productive workforce. However, widespread unemployment



- ❖ **Skill Training in Urban Areas :** SPAN conducted skill training programs in three municipalities within North 24 Parganas district, covering South DumDum, Titagarh, and Kamarhati.

SPAN conducted regular training in health, personality grooming, computer literacy, and beautician skills.

| Name of the trade | Total Number of Trainees | Total Job Placed |
|------------------------------|--------------------------|------------------|
| Personality Grooming | 120 | 45 |
| GDA | 350 | 200 |
| Beautician | 85 | 40 |
| Domestic Data Entry Operator | 25 | 15 |

The different sectors where the trainees were placed are as follows :

| Sectors | Personality Grooming | GDA | Beautician | Domestic Data Entry Operator |
|----------------------------|----------------------|-----|------------|------------------------------|
| Trade Specific Work | 30 | | 20 | 40 |
| Self - Employment | 5 | | 8 | 10 |
| Nursing Home & Health Unit | | 12 | | |
| Home Health Aid Services | | 100 | | |
| Not Working | 10 | 88 | 12 | 18 |



- ❖ **Skill Training in Rural Areas :** In rural areas, spanning South 24 Parganas, Bankura, Purulia, and Jalpaiguri districts, SPAN conducts computer training centers every six months to equip school-going children, youth and women with computer skills.



Computer Training : Every six months, a batch of 20 students completes training, with a total of 50 students achieving an average score of 80%. Some students have progressed to advanced computer courses over time.



Jalpaiguri :

| SL. No. | Course Name | No. of Youth trained | | | No. of Youth placed in formal employment | | |
|---------|---------------------|----------------------|-----|-------|--|-----|-------|
| | | M | F | Total | M | F | Total |
| 1 | Data Entry Operator | 63 | 171 | 234 | 49 | 126 | 175 |
| Total | | 63 | 171 | 234 | 49 | 126 | 175 |

Bankura :

| Name of the trade | Total Number of Trainees | Total Job Placed |
|------------------------------|--------------------------|------------------|
| Domestic Data Entry Operator | 60 | 45 |

YOUTH AND GOVERNANCE

The future success of securing ecological resource rights for Adivasi and urban poor depends on engaged children and youth who value natural resources and culture. It is crucial to develop them as informed and active citizens committed to the environment, culture, and democratic values.

In a proactive initiative, trained Youth Council members conducted career counselling sessions in Kamarhati, Barrackpore, and Pramod Nagar. Held within local government schools, these sessions



engaged youths aged 16 and above, aiming to understand their current engagements, aspirations, and needs while introducing them to SPAN's dedicated youth programs.

A comprehensive leadership training program was conducted for youth leaders from South and North 24 Parganas, Jalpaiguri, Purulia, and Kolkata. The training covered SWOT analysis, defining vision, mission, and goals of a youth organization, helping

leaders identify their roles and understand essential elements. A follow-up workshop empowered youth leaders to structure their governing bodies and formulate constitutions, ensuring a personalized approach aligned with their unique goals.

12 Youth Council are formed in 7 districts with 84 council members.

SPAN fosters the youth to take initiative to join platforms at state and national level to define and voice the hope of changes.

CLIMATE ACTION BY AND FOR THE YOUTH

- ❖ **Sundarban Charcha** : The Youth Council organized a workshop at Durbachati Krishnapur Junior High School and Basanti High School (H.S) involving 120 students. The focus was on the impact of climate change on Sundarbans, highlighting threats to human lives, the biodiversity of animal and plant families, and strategies for conservation. Titled '**Sundarban Charcha**', the session aimed to raise awareness among students about climate change effects on Sundarbans, with 25 youth team members receiving specialized training led by Sundarban Researcher Animesh Sinha.



- ❖ **Holistic Approach to Solid Waste Management** : A collaborative meeting was held with panchayat officials, Bazar Committee members, and the youth team to address solid waste management challenges in Basanti block. Government officials committed to formulating comprehensive block-level plans for systematic garbage disposal in markets. Proactive initiatives will ensure sustained and effective waste management. SPAN, in collaboration with the Youth Team



and Bazar Committee, will organize awareness programs in diverse areas to enhance awareness.

- ❖ **Empowering Youth for Environmental Advocacy** : In a bid to foster environmental consciousness, members of the Youth Team and children's groups took charge by organizing street corner gatherings and rallies at the village level. These events aimed to raise awareness about pressing environmental issues.





- ❖ **Youth-Driven Advocacy and Community Impact** :Equipped with diverse training, these youth groups autonomously conducted awareness programs in their respective areas, emphasizing the local impacts of climate change. They actively engaged in awareness campaigns addressing various child rights



issues and contributed to community-wide awareness through impactful wall writings. Moreover, the issue of drinking water scarcity in the area has been brought to the forefront at village panchayat discussions, with concerted efforts being made to find and implement solutions.

CHANGE STORY

« Mamata Halder's Journey of Resilience and Empowerment »

Mamata Halder, a resilient 26-year-old woman, embarked on a transformative journey fueled by determination and hard work. Hailing from a poor and underprivileged family of eight, she faced the daily struggles of making ends meet with her father's meager income as a plumber. The challenges escalated as several family members, including her mother, one sister, and grandmother, grappled with various health issues, demanding substantial medical expenditures.



In the face of these hardships, Mamata, the eldest daughter, resolved to break the cycle of poverty and become a beacon of hope for her family. Armed with a graduation degree, she

sought ways to contribute financially. Fate smiled upon her when she discovered leaflets distributed in her community about the "Core Employability Skills Training" program.

Recognizing this as an opportunity to equip herself with the skills needed for gainful employment, Mamata promptly applied and secured a spot in the program. Over the course of three months, Mamata immersed herself in learning essential skills such as communication, problem solving, customer-centricity, digital literacy, and teamwork. The focus on soft skills development not only enhanced her communication abilities but also bolstered her confidence to engage effectively with others. Her basic computer knowledge, too, saw a remarkable improvement.

With unwavering dedication, Mamata attended classes, completed tasks diligently, actively participated in activities, and excelled in assessments, successfully completing the training. Armed with her newfound skills, Mamata secured a position as a "Customer Service Associate Voice" at "Teleperformance Global Services Private Limited". Despite her base location in Hyderabad, Mamata adapted to the challenges posed by the COVID-19 pandemic and currently works from the comfort of her home.

Today, Mamata stands not only as a self-reliant individual but also as the pillar of support for her family, contributing significantly to household expenses. Her journey serves as an inspiring testament to the transformative power of determination, hard work, and the right opportunities.



« Arman Ali's Inspiring Journey of Transformation and Leadership »

In the heart of Barrackpore, Arman Ali, a resilient class XII student, has been a driving force in the youth group for over six months, navigating life's complexities with determination. Despite economic challenges within his family, Arman did not let adversity deter his dreams. Instead, he embraced a part-time job at a bag company, demonstrating a profound commitment to supporting his education. This pivotal decision marked the beginning of Arman's transformative path.

Initially shy at the youth center, Arman overcame his reservations, becoming a proactive participant and embracing various experiences. This transformation became a catalyst for personal growth, turning Arman into one of the group's most active members.

Now, Arman serves as a trainer, inspiring others with his wisdom and experiences. His journey from reserved individual to dynamic leader exemplifies the transformative power of active participation and dedication, resonating not only within the youth center but also as a testament to the possibilities that arise when facing challenges with resilience and a thirst for knowledge. Arman's story reflects the profound impact of change on an individual and its ripple effect within a community.

WOMEN

WOMEN IN DEVELOPMENT

SPAN emphasizes women's participation in accessing public development resources and decision-making for development in specific. The approach focuses on empowering women while ensuring their rightful participation in local governance.

❖ **Women Mobilization and Forming**

"NARISHAKTI" : SPAN fosters and facilitates the formation of the women's organization

"NARISHAKTI". SPAN prioritizes women's rights and entitlements, addressing obstacles through organized

meetings and training. The objectives include:

- **Equal Educational Opportunities** : Advocating for equal opportunities in higher education, resisting gender-based discrimination, and opposing early marriages.
- **Empowering Women Workers** : Organizing unorganized workers, particularly in tea gardens, to collectively claim and access their labor rights.

- #### ❖ **Data Generation by Women Council** : A Women Council is a vital component in every operational village, consisting of 10 to 20 members. It goes beyond traditional savings and credit groups, focusing on addressing women's issues, including income generation and increasing women's work participation rates. The Women Council prioritizes data generation with the theme **"Our Village, Our Issues"**. After data generation, the women members, through de-segregation of data, develop a work plan addressing assets, property, gender relations, etc.

❖ **Capacity Building of Women** :

SPAN's capacity building for women focuses on Women Council members. A module, covering organization building, the rationale for women's solidarity, organization management, issue identification with facts, women's participation in income generation, and local governance, is integral to the

women empowerment process. In the reporting period, SPAN organized 53 capacity-building workshops, with over 2500 women participating.

❖ **Addressing systemic challenges in the workforce:**

- **Increased Workforce Participation** : Encouraging and facilitating higher participation of women in the workforce.



- **Enhanced Social Security Measures** : Tackling issues like inadequate wages, wage disparities, and absence of social security provisions.
- **Mitigating Workplace Challenges** : Working towards a safer and more supportive work environment by addressing leave absence and harassment issues.

SPAN aims to empower women, break down educational and workplace barriers, and foster a more inclusive society.

- ❖ **Empowering Tea Garden Workers** : SPAN focuses on capacitating women workers and leaders in tea gardens through targeted training on essential laws and regulations, fostering a knowledgeable workforce.
- ❖ **Collective Empowerment** : The initiative spurs collective actions among women workers to secure their rights, leading to a notable increase in the number of female leaders within the sector.
- ❖ **Informed Discussions and Advocacy** : SPAN facilitates discussions on entitlements through information dissemination, assistance in accessing rights, capacity building, and advocacy, creating a more informed and empowered workforce.

WOMEN LIVELIHOOD

- ❖ **Narishakti's Pursuit of Self-Reliance** : Narishakti members actively work to achieve self-reliance by connecting with block-level government services. They disseminate information and assist households excluded from existing services, ensuring inclusivity and self-sufficiency for all.



- ❖ **Computer Skill Training for the Deprived Women** : Women are proactively embracing computer training to enhance employability in the local job market, aligning with their aspirations for economic independence and overall community empowerment.

WOMEN AND GOVERNANCE

Women have the right and responsibility to participate in biannual Gram Sansad (GS) meetings. Before SPAN's intervention, women in a village where SPAN works did not engage in GS meetings. Through various activities like data generation, capacity building, and mock sessions, SPAN empowered women council



members with relevant data. During the reporting year, women enthusiastically participated in two GS meetings, presenting their data and plans for the Gram Panchayat's Plan.

WOMEN ACTION

- ❖ **Empowering Women's Voices at Panchayat and Block Levels :** Once hesitant in Panchayat and Block-level affairs, women now actively address and resolve their concerns, marking a transformative shift as they directly contribute to solutions at higher administrative levels.
- ❖ **Community Awareness on Women's Issues :** Women councils and leaders are actively raising awareness in local communities about women-centric issues, including domestic violence, early marriage, child and maternal health, and school dropout rates. This proactive approach aims to instigate positive change and contribute to the overall well-being of women in the community.
- ❖ **Promoting Economic Independence of Women Excluded So Far :** In a proactive effort to foster self-reliance among Narishakti members, SPAN organized a comprehensive fisheries training session in its operational areas. The goal was to equip women with the skills for organized fisheries with government support. Officials from the fisheries department and the Gram Panchayat attended. The training led to the formation of two officially registered



groups, comprising a total of 40 women, guided by the block officer. These empowered teams have begun their fishing endeavors, contributing to the sustainable development and economic empowerment of the area.

CHANGE STORY

« Chobi Rani Mahato's Inspiring Journey of Resilience and Leadership »

In the quaint village of Pirorgaria, nestled on the edge of the mountain in Purulia district, Chobi Rani Mahato's life underwent a profound transformation. Having married at the tender age of eighteen, Chobi Rani found herself confined to the traditional roles expected of a wife and daughter-in-law. Despite societal expectations, a burning desire for knowledge led her to pursue a Bachelor's degree in Geography, defying norms in her village. Marriage and motherhood did not deter her, but tragedy struck when her husband fell critically ill, leaving the family's agricultural land—their primary source of income—abandoned for medical treatment. Despite her efforts, Chobi Rani couldn't save her husband or the farmland.



Widowed with three daughters, Chobi Rani turned to making bidis for a meager income. Despite the hardships, she joined SPAN as a women's group member, eventually becoming a guiding light for others. Her leadership skills emerged as she assisted women in accessing entitlements and navigating bureaucratic processes.

Chobi Rani's vision extends beyond personal struggles; she aspires to make a broader impact. Recognizing her potential, SPAN pledged unwavering support. Chobi Rani Mahato's story exemplifies resilience, determination, and the transformative power of embracing change. Through her leadership, she aims to uplift not only herself but also empower others in a community where strength and solidarity prevail.

A Unique Initiative of SPAN - ANANDADHARA SHIKSHAYATAN

Anandadhara, operated by SPAN in Promodnagar, North 24 Parganas, is a formal school primarily catering to migrants engaged in informal occupations. It offers formal sessions up to Class V, ensuring enrollment in government schools. Anandadhara supports continued education through tutorials and provides free coaching and curricular support up to Class XII.



Highlighting Key Aspects of Anandadhara's Regular Activities:

- Regular Academic Classes :** At Anandadhara, we provide regular academic classes for students from nursery to class 5, focusing on delivering high-quality education to socially and economically marginalized populations. We follow the curriculum and syllabus set by the West Bengal Board of Primary Education.
 - Our Teaching Approach:** We adopt a participatory teaching approach, incorporating STEM methods and computer literacy for grades 3 to 5, creating an inclusive and engaging learning environment for children.
 - Assessment and Evaluation:** We employ a comprehensive assessment and evaluation system that includes both formative and summative assessments.
 - Academic Enrollment Statistics:** Anandadhara provided education to a total of 442 students across various classes, as detailed in the table below:



| Class | Age Group | No. of Children | | Total |
|-------------|--------------|-----------------|-------|-------|
| | | Boys | Girls | |
| Pre-primary | 3 - 6 years | 94 | 85 | 179 |
| I | 6 - 7 years | 23 | 19 | 42 |
| II | 7 - 8 years | 30 | 36 | 66 |
| III | 8 - 9 years | 37 | 34 | 71 |
| IV | 9 - 10 years | 32 | 27 | 59 |
| V | 10-11 years | 13 | 12 | 25 |
| Total | | 229 | 213 | 442 |

2. **Co-curricular Activities** : Anandadhara places a strong emphasis on co-curricular activities, including drawing, music, dance, recitation, drama, creative writing, and games. We also celebrate significant days that contribute to the holistic development of our students.



3. **Engagement with Parents and Stakeholders** : Monthly parent meetings are conducted for each class. Anandadhara also engages with related stakeholders, including councilors and MIC education officials, who participate in various school activities. Anandadhara also organize programs to reach out to the communities through awareness camps and dialoguing with parents.



4. **Supplementary Nutrition Program** : Anandadhara Shikshayatan supports the nutritional needs of students from Nursery to Class V through a specialized program, crucial for those facing economic challenges. The Supplementary Nutrition Program, with financial assistance from NGOs when available, provides nutritious meals every weekday for students.

5. **Remedial Study Center** : Recognizing the importance of personalized learning and academic support, Anandadhara Shikshayatan operates a Remedial Study Center. This center caters to students in grades 5 to 10, as well as dropout students preparing for the 10th-grade examination through Open University programs.

Campaign and Networking

SPAN is the State Convenor of **Campaign Against Child Labour (CACL)** West Bengal Chapter jointly with Caritas India (Eastern Zone). CACL is initiated in the year 1992 and over the years it spread in 18 states of India and among 3000 member organizations. CACL aims for Total Eradication of Child Labour upto their 18 years of age. Many Trade unions, student forums, women organizations and eminent citizens are the part of CACL across the country.



Right to Education Forum : SPAN leads the RTE Forum in the state of West Bengal since 2014, while it is also a part of the National Council. RTE spreads over 16 states and two union territories. However, even after more than a decade of RTE enforcement, only 25.5% of schools in the country today are RTE compliant. And despite the long-standing demand for investing at least 5% of country's GDP on education, there still is a huge budget gap in education. This is being the issue of the campaign and advocacy with the government, both at the state as well as in the central.

Indian Youth Federation (IYF) : SPAN empowers youth, recognizing their potential to become exemplary citizens. Through educational and training initiatives, SPAN has fostered a collaborative Youth Council, giving rise to the '**Indian Youth Federation (IYF)**'. Comprising members from six states, IYF focuses on increasing youth participation in respect to education and climate change aligning with Sustainable Development Goals. IYF aspires to create a socially just and economically productive Indian society, emphasizing education as a catalyst for positive change. By providing a platform for learning and contribution, IYF guides youth toward becoming proactive '**Change Makers,**' fostering sustainable societal improvements.



SPAN's Partners in Development

- Child Line of Kolkata, North 24 Parganas, & Jalpaiguri
- Child Welfare Committee, Jalpaiguri
- Child Welfare Committee, Birbhum
- Child Welfare Committee, North 24 Parganas
- District Child Protection Society, Birbhum
- District Child Protection Society, North 24 Parganas
- District Child Protection Society, Jalpaiguri
- District Child Protection Unit, Kolkata
- District Social Welfare Department, Birbhum
- State Child Protection Society
- Block Development offices of Matiali, Mal, Nagrakata, Jhalda 1 & 2, Baghmundi, PatharPratima, Basanti, Madarihat, Dinhata – I, Dinhata – II, Sitalkuchi, Jhargram, Salboni.
- Block Development Office of Dumka, Jharkhand
- Different Gram Panchayat and their members of Dumka Block, Jharkhand
- Kamarhati, Barrackpore, & South DumDum Municipality
- Ward Councillor and Ward Offices of different wards of Kolkata Municipal Corporation
- SimaSurakshaBal, Jalpaiguri
- Terre Des Hommes (Suisse)
- Misereor, Germany
- Kindermissionswerk, Germany
- SMILE Foundation
- CARITAS India
- Terre Des Hommes, Germany
- Terre Des Hommes Foundation
- Mobile Crèches
- Campaign Against Child Labour (CACL)
- National Right to Education (RTE) Forum
- West Bengal Right to Education (RTE) Forum
- National Action Coordination Group (NACG) under SAIVAC
- Haq – Centre for Child Rights
- Center for Budget Governance and Accountability (CBGA)

Policies adapted and followed by SPAN

1. Intellectual Property and Data Protection Policy
2. Anti – Money Laundering Policy
3. Anti – Bribery and Anti – Corruption Policy
4. Code of Conduct Policy
5. Conflict of Interest Policy
6. Financial Policy
7. Human Resource Policy
8. Procurement Policy
9. Child Protection Policy
10. Prevention of Sexual Harassment at Workplace Policy

Legal Status

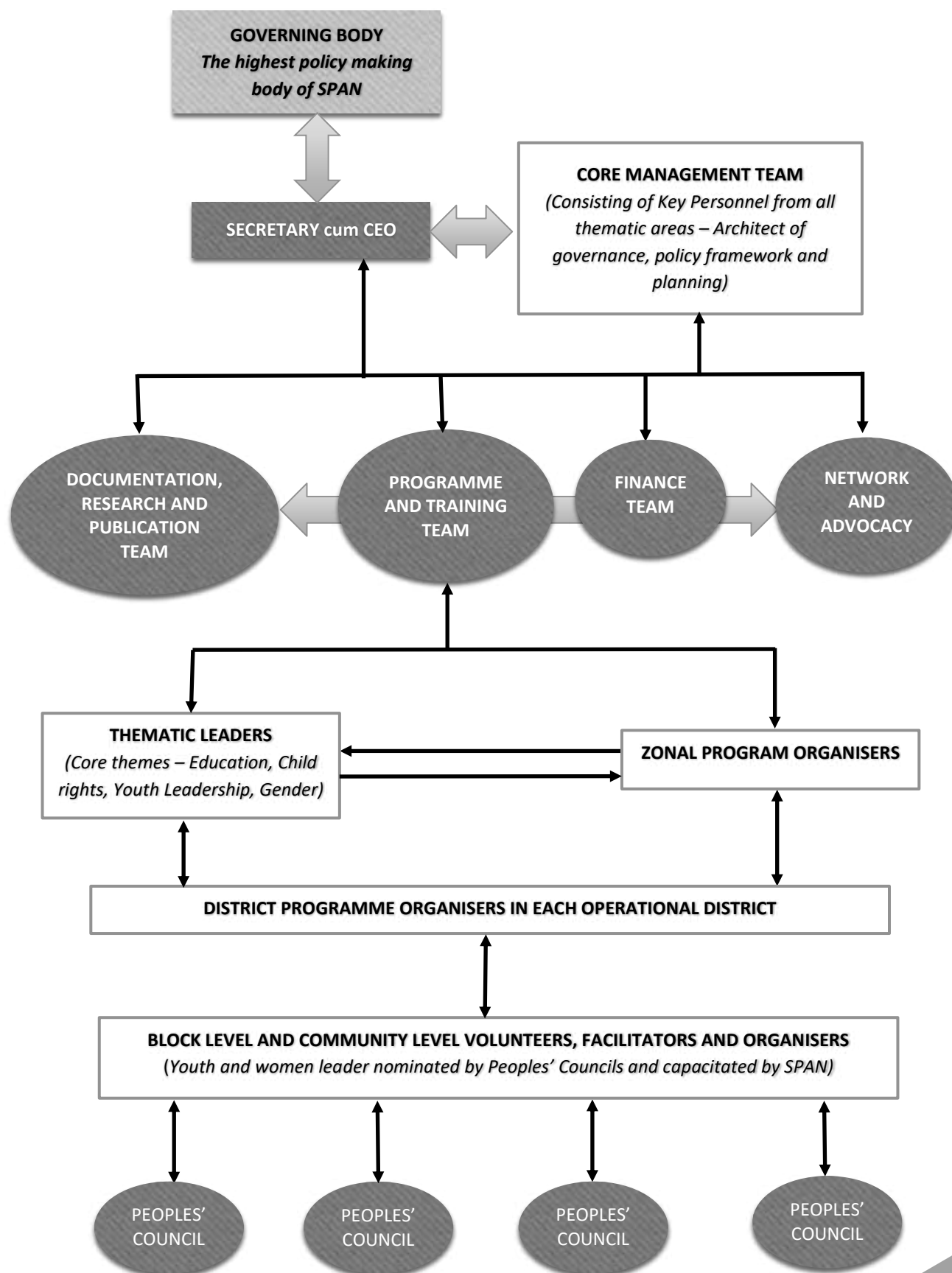
REGISTRATION OF SPAN

SPAN is registered under the Society Registration Act 1961.

GOVERNING BODY MEMBERS OF SPAN

| Name | Occupation | Designation |
|-------------------------|-----------------|-------------|
| Ms. Sujata Dasgupta | Social Worker | President |
| Mr. Prabir Kumar Basu | Service | Secretary |
| Mr. Anjan Saha | Service | Treasurer |
| Ms. Suvra Banerjee Paul | Child Counselor | Member |
| Ms. Sampa Das | Service | Member |
| Ms. Rita Sen | Social Worker | Member |
| Ms. Basudeb Banerjee | Social Worker | Member |

ORGANOGRAM



Financials

(SPAN) SOCIETY FOR PEOPLES' AWARENESS
66/2, SARAT CHANDRA DHAR ROAD,
KOLKATA- 700090.

BALANCE SHEET (Foreign & Non Foreign Contribution Sections) AS AT 31ST MARCH, 2023

| LIABILITIES: | Sch.No. | (Rs.) FC Section | Amount (Rs.) NFC Section | Total Amount (Rs.) |
|---|---------|------------------|--------------------------|--------------------|
| (Unrestricted) General Fund | 1 | 659,853 | 2,611,768 | 3,271,621 |
| (Restricted) Project Fund | 2 | 1,139,154 | (144,390) | 994,764 |
| Current Liabilities: | | | | |
| Sundry Creditors & Provisions | 3 | 60,276 | 111,223 | 171,499 |
| Advances | 5B | | 300,001 | 300,001 |
| TOTAL: | | 1,859,283 | 2,878,602 | 4,737,885 |
| ASSETS: | | | | |
| Non Current Assets: | | | | |
| Fixed Assets (at written down values) | 4 | 838,801 | 1,541,506 | 2,380,307 |
| Current Assets: | | | | |
| Advances | 5A | 10,190 | 179,386 | 189,576 |
| Tax deducted at sources 2020-21 | | | 10,886 | 10,886 |
| Tax deducted at sources 2021-22 | | | 329 | 329 |
| Tax deducted at sources 2022-23 | | 700 | 900 | 1,600 |
| Cash & Bank Balances | | | | |
| Cash in hand (as certified by management) | | 8,685 | 697 | 9,382 |
| Cash at Bank | 6 | 1,000,907 | 1,144,898 | 2,145,805 |
| TOTAL: | | 1,859,283 | 2,878,602 | 4,737,885 |

In terms of our report of even date

for DAS DIPAK & CO.
Chartered Accountants



Dipak Das
Dipak Das
(Proprietor)

Date : 09.07.2023
Place : Kolkata 700 067

For (SPAN) Society for
Peoples' Awareness

Sujata Sengupta
President

For (SPAN) Society for
Peoples' Awareness

Debi Bhowmik
Secretary

For (SPAN) Society for
Peoples' Awareness

Anjan Das
Treasurer

Financials

(SPAN) SOCIETY FOR PEOPLES' AWARENESS
86/2, SARAT CHANDRA DHAR ROAD,
KOLKATA - 700090

INCOME & EXPENDITURE ACCOUNT (Foreign & Non Foreign Contribution Sections) FOR THE YEAR 1ST
APRIL 2022 TO 31ST MARCH 2023

| INCOME: | Sch.No | FC Section | NFC Section | (Rs.) |
|--|--------|-------------------|------------------|-------------------|
| Grants for Projects Utilized : | 7 | 12,117,162 | 3,119,302 | 15,236,464 |
| Other Income: | 8 | 6,460 | 113,629 | 120,087 |
| Donation and another fund | | | 1,696,431 | 1,696,431 |
| Deficit of Income over Expenditure transferred to General Fund | | 431,527 | 387,338 | 818,865 |
| TOTAL INCOME | | 12,555,149 | 5,216,698 | 17,871,847 |
| EXPENDITURE: | | | | |
| Campaign Against Child Labour Programme (TDH Germany) | 9 | 141,210 | | |
| Holistic Development and Leadership among Youth and Children of Slum Pocket of Kolkata, West Bengal | 10 | 4,479,595 | | |
| HSBC-Skills for Life | 11 | 407,364 | | |
| Strengthening Poor and Marginalised Citizens' Collectives and Leadership for Livelihood in 8 Districts of W.B./India - April 2022 to October 2022. | 12 | 4,163,190 | | |
| Direct Assistance to the Victims of Trafficking in Persons, exclusively for Girls, for preventing re-trafficking in the Tea Garden of Jalpaiguri District of West Bengal, India (United Nation Voluntary Trust Fund) | 13 | 297,883 | | |
| Citizen Manage SDG Compliance in Two States of India - November 2022 to March 2023 | 14 | 2,628,900 | | 12,117,162 |
| Other Payments | | | | |
| Loss of Bank Deposit | | 359,998 | | 359,998 |
| Mobile Creches | 15 | | 671,822 | |
| Project Horizon | 16 | | 298,649 | |
| M.C. Other Program | 17 | | 73,500 | |
| Nutrition (Smile) | 18 | | 1,418,585 | |
| Employability Skills in Healthcare (Smile) | 19 | | 390,356 | |
| MIS - LC | 20 | | 266,390 | 3,119,302 |
| Establishment Expenses | 20 | | 2,021,811 | 2,021,811 |
| Depreciation on Assets | 4 | 77,989 | 175,585 | 253,574 |
| TOTAL EXPENDITURE | | 12,555,149 | 5,216,698 | 17,871,847 |

In terms of our report of even date

for DAS DIPAK & CO,
Chartered Accountants

Dipak Das
Dipak Das
[Proprietor]

Date : 09.07.2023
Place : Kolkata-700 057



For (SPAN) Society for
Peoples' Awareness

Sujata Dasgupta
President

For (SPAN) Society for
Peoples' Awareness

Debi Banerjee
Secretary

For (SPAN) Society for
Peoples' Awareness

Anandadev
Treasurer

Financials

(SPAN) SOCIETY FOR PEOPLE'S AWARENESS
66/2, SARAT CHANDRA BHAR ROAD,
KOLKATA- 700090

**RECEIPTS & PAYMENTS ACCOUNT (Foreign & Non Foreign Contribution Sections) FOR THE YEAR 1ST
APRIL 2022 TO 31ST MARCH 2023**

| RECEIPTS: | Sch.No. | Amount (Rs.) FC Section | Amount (Rs.) NFC Section | Total Amount (Rs.) |
|---|---------|----------------------------|-----------------------------|-----------------------|
| Cash in hand | | 14,851 | 813 | 15,664 |
| Cash at bank | 24 | 3,409,536 | 869,339 | 4,278,875 |
| Grants for Projects | 7 | 10,021,514 | 3,627,353 | 13,648,872 |
| Other Income | 8 | 6,460 | 112,727 | 119,187 |
| TDS | | | 29,250 | 29,250 |
| Advances Repaid | 23 | | 656,179 | 656,179 |
| Donation and community contribution | | | 1,696,431 | 1,696,431 |
| TOTAL RECEIPTS | | 13,452,366 | 6,392,092 | 19,844,458 |
| PAYMENTS: | | | | |
| Project Payments: | | | | |
| Campaign Against Child Labour Programme (TDR Germany) | 9 | 141,230 | | |
| Holistic Development and Leadership among Youth and Children in Slum Pocket of Kolkata, West Bengal | 10 | 4,479,595 | | |
| HSBC-Skills for Life | 11 | 400,668 | | |
| Strengthening Poor and Marginalised Citizens' Collectives and Leadership for Livelihood in 8 Districts of W.B./India - April 2022 to October 2022 | 12 | 4,142,410 | | |
| Direct Assistance to the Victims of Trafficking in Persons, exclusively for Girls, for preventing re-trafficking in the Tea Garden of Jalpaiguri District of West Bengal, India (United Nations Voluntary Trust Fund) | 13 | 297,083 | | |
| Citizen Manage SDG Compliance in Two States of India - November 2022 to March 2023 | 14 | 2,595,900 | | 17,056,986 |
| Mobile Cheques | 15 | | 671,822 | |
| Project Horizon | 16 | | 298,699 | |
| HSBC Local | 17 | | 73,500 | |
| Nutrition (Smile) | 18 | | 1,418,585 | |
| Employability Skills in Healthcare (Smile) | 19 | | 350,356 | |
| MIS - LC | 20 | | 266,390 | 3,119,302 |
| Other Payments | | | | |
| Loan of Bank Deposit | | 339,998 | | 359,998 |
| TDS | | 700 | | 700 |
| Establishment Expenses | 21 | | 2,063,960 | 2,063,960 |
| Payment of Liabilities | | 15,000 | 26,240 | 41,240 |
| Advances given | 22 | 10,190 | 36,995 | 47,185 |
| Closing Balances: | | | | |
| Cash in hand | 6 | 8,685 | 697 | 9,382 |
| Cash at bank | | 1,000,907 | 1,144,098 | 2,145,005 |
| TOTAL PAYMENTS | | 13,452,366 | 6,392,092 | 19,844,458 |

In terms of our report of even date

for DAS DIPAK & CO.
Chartered AccountantsDate : 09.07.2023
Place : Kolkata-700067Dipak Das
Dipak Das
(Proprietor)For (SPAN) Society for
People's AwarenessSujata Sengupta
PresidentFor (SPAN) Society for
People's AwarenessDebmalya
SecretaryFor (SPAN) Society for
People's AwarenessAnjanika
Treasurer